

# Upton Village Hall Group.

## Additional conditions of hire regarding use of play equipment.

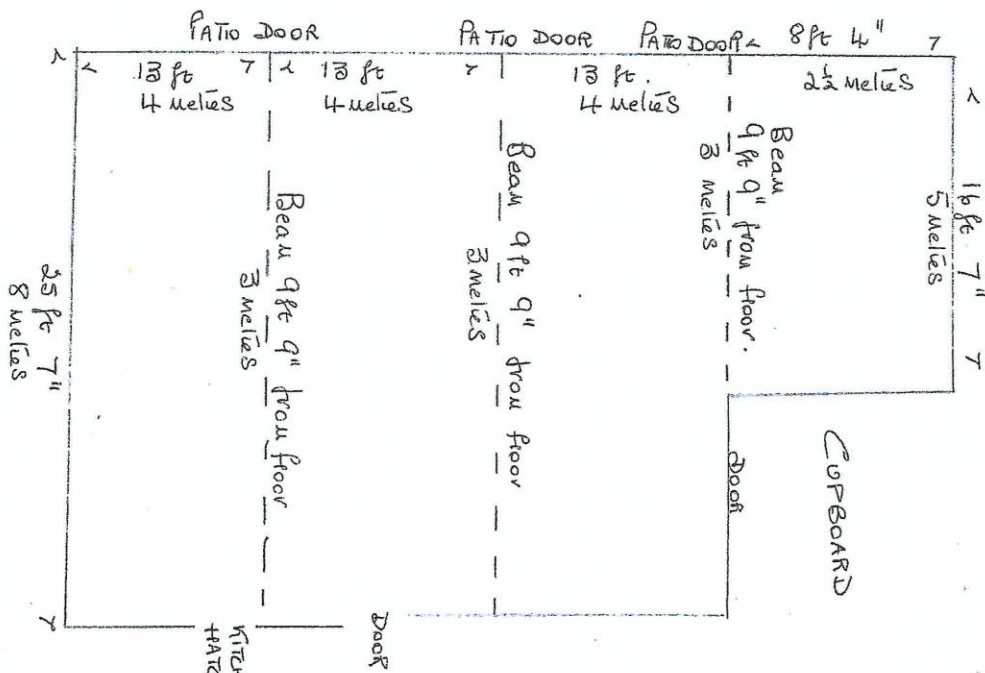
When a company, organisation or individual hires or uses equipment they become subject to the Health and Safety at Work Act 1974 and the Provision and Use of Play equipment Regulations. This legislation places a duty of care on everyone involved to make every effort to ensure that the equipment is used as safely as possible. The term 'equipment' includes, but is not limited to, bouncy castles and similar inflatable attractions, ball pools and soft play resources.

**Therefore, please note that the use of these attractions is only allowed at Upton Village Hall subject to the following conditions.**

- 1) Responsibility for the safety of all equipment users and spectators rests with the hirer of the hall and/or owner of the said equipment. Upton Village Hall will not be responsible or held liable in any way for accidents resulting from the use of such equipment in or around the hall.
- 2) The hirer of the hall must have adequate public liability insurance and any relevant safety certificates. All electrical equipment must be the subject of a current PAT certificate. **Prior to the hire date the hirers must provide Upton Village Hall Group with proof of adequate public insurance, plus copies of safety certificates if appropriate.** Please note that all responsible adults supervising the use of the play equipment should also have their own public liability insurance to cover accidents or damage during the event of hire period.
- 3) Equipment must be of a suitable size/design for the size of children attending the event and, if used indoors, be of a suitable size to fit safely within the confines of the hall. See plan below (i.e. under the low roof beams and without blocking the fire exits)
- 4) **Prior to the hire date the hirer must provide Upton Village Hall Group with a written risk assessment regarding the use of the play equipment.** The risk assessment should incorporate and take into account the manufacturers safety instructions which must be adhered to at all times.

I confirm that I understand and will abide by the above conditions.

Signature of hirer..... Date..... Hire Date.....



UPTON VILLAGE HALL  
MAIN HALL PLAN (NOT TO SCALE)

OCTOBER 2023